

**IN-PERSON 2022 INCOSE San Diego Mini-Conference**  
**Saturday, December 3rd, 2022**



# Demonstrating Resilience as Systems Engineers



Sri Harsha Maramraju

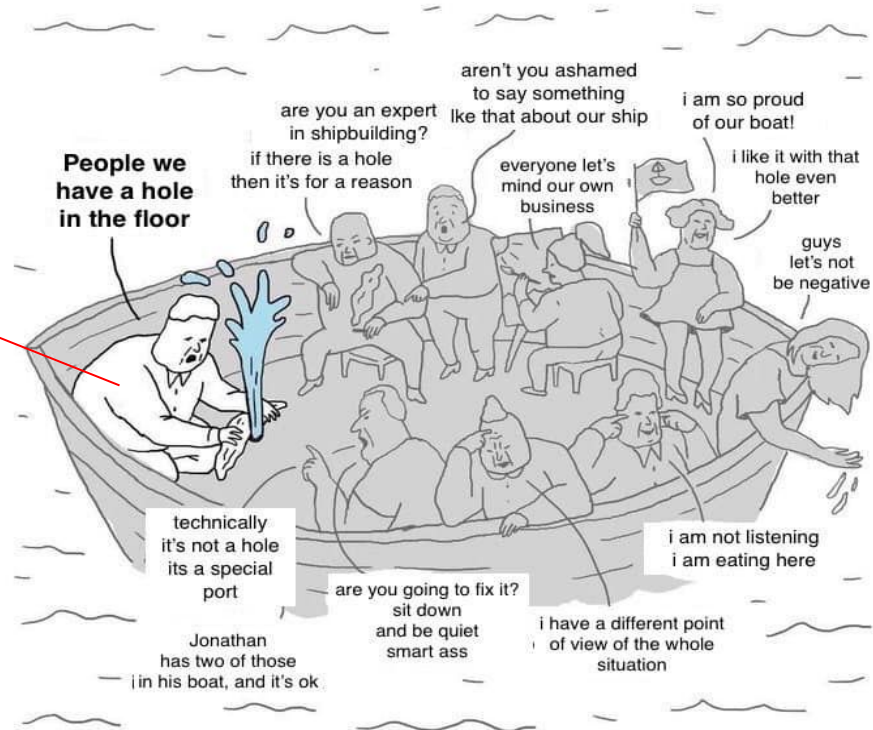
## Conway's Law - 1967

“Organizations which design systems.....are constrained to produce designs which are copies of the communication structures of those organizations.”

- Melwin E. Conway

# Our beloved Systems Engineer...

This, right here, is  
your Systems  
Engineer



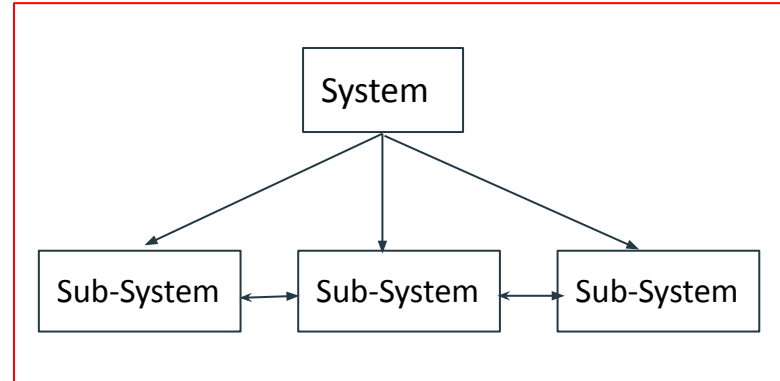
Systems Engineer is expected to:

- Catch errors early.
- Effectively communicate.
- Help minimize rework.
- Be comfortable with change.
- Take chaos and bring structure to it.

# General role of a typical Systems Engineer

- Come up with Architectures that meet corporate goals.
- Perform feasibility analyses to assess Technology readiness level (TRL). Identify technical risks.
- Elicit and clarify requirements before jumping into a conclusion.
- Create operational model of the system and support activities.
- Determine solutions to technical issues which will define system architecture, requirements, and capabilities.
- System Integration, Test, and Analysis.
- Post-launch field issues.

In general, a **Systems Engineer** is responsible for everything about the System



# Different Types of Systems Engineer (per any job profile)

- Systems Engineer
- Lead/Senior/Staff/Technical/Principal/Chief Systems Engineer
- Systems Software Engineer
- Systems Safety Engineer
- Requirements/V&V Systems Engineer
- Systems Architect
- Systems Integration Engineer
- Systems Service Engineer
- Systems Scientist
- Systems Specialist
- Systems Product Owner
- ...

**VS**

- Program Manager
- Lead Design Engineers
- Speciality Engineers
- Support Personnel
- Team Leaders
- ...

“Systems Engineers CANNOT be expected to have blinders on and work in their comfort zones...”

“System Engineers are NOT who you are, it is what you do...”

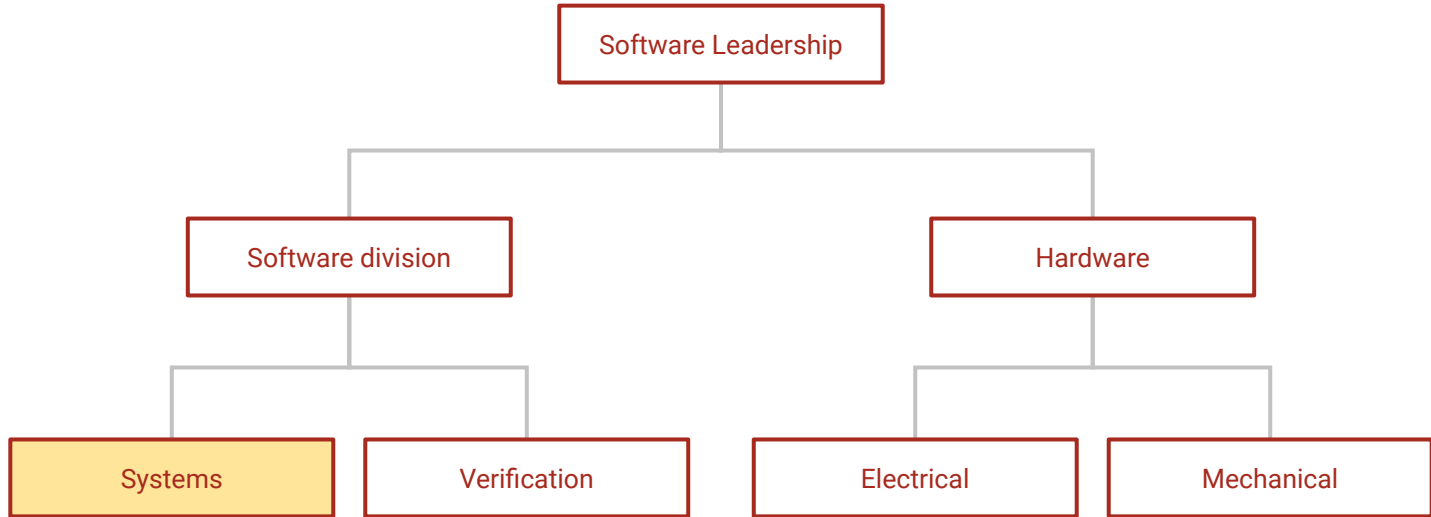
# Your values, your R-A-C-I

Question: Is Systems Engineering a 'Supporting Role' or is it a dedicated role in your organization?

- RACI - Responsible, Accountable, Consulted, Informed.
- Responsibility, Accountability and Authority (RAA) - definitions
- Who has the RAA of a project?
- How often do System Engineers have the authority to make decisions? And what kind of decisions?

# Scenario 1: Journey of a SE in a Software Company

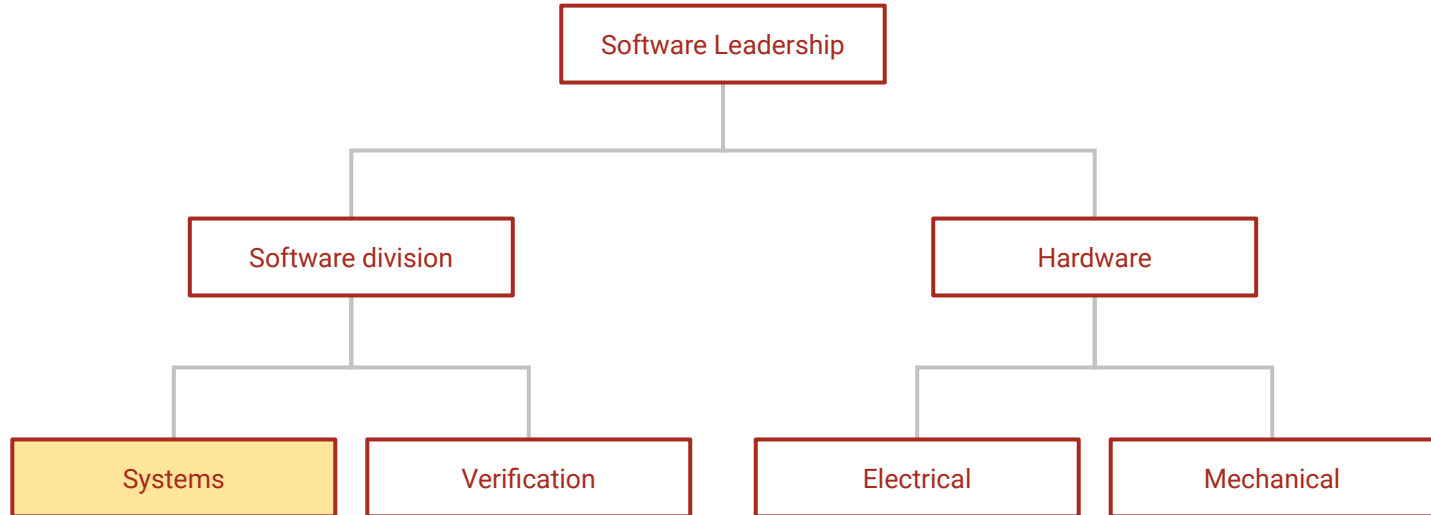
- Software developers acting as Systems Engineers.
- Often see creating Software workstream with Systems activities baked into it.
- Driven by Agile tools



# Scenario 1: Journey of a SE in a Software Company

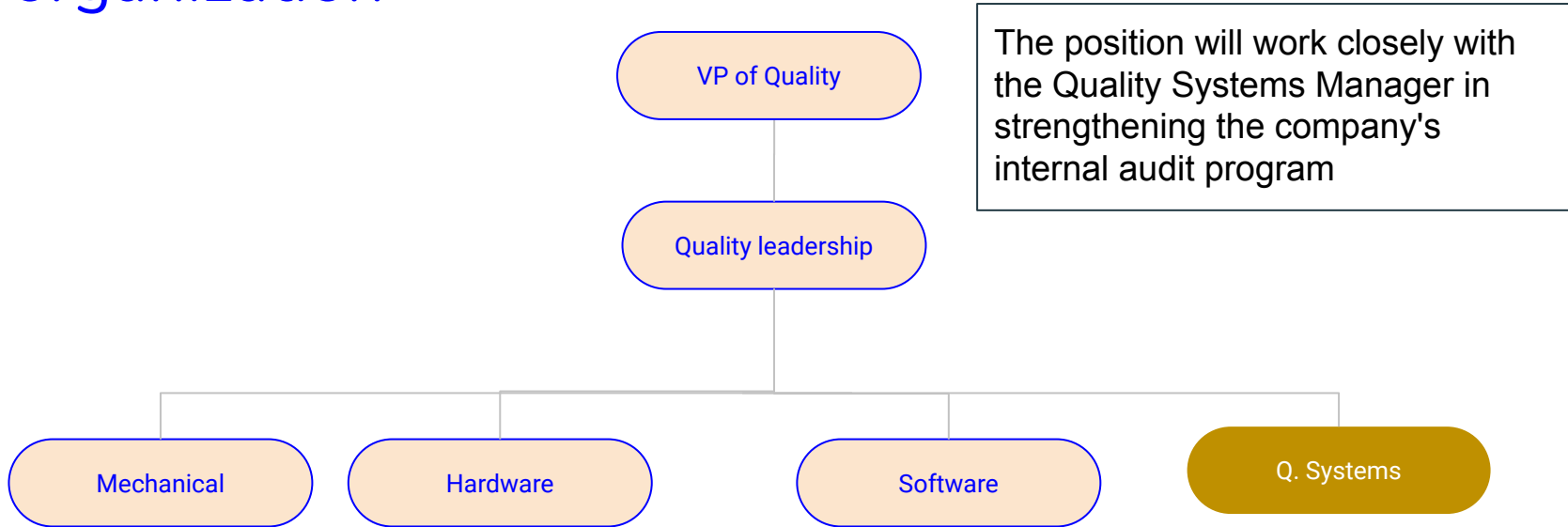
## Challenges:

- May lack the ability to empower.
- Functional teams may not wait for Systems engineers to finalize Needs and System-level requirements.
- System requirements may read like Software requirements.

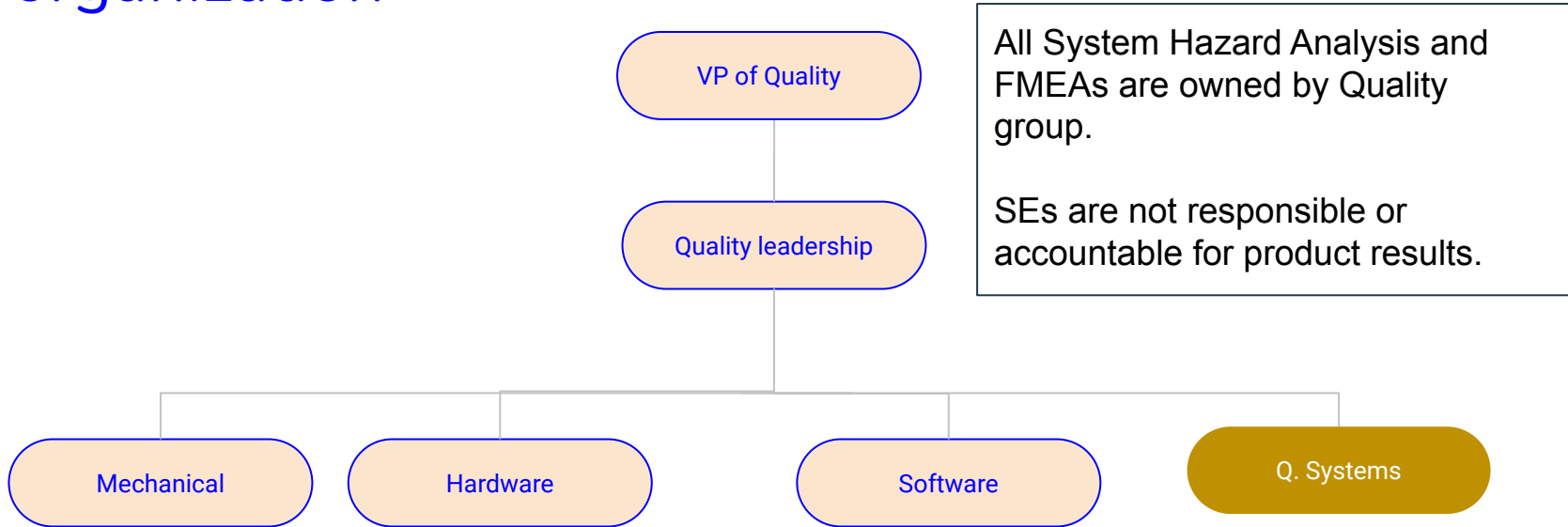




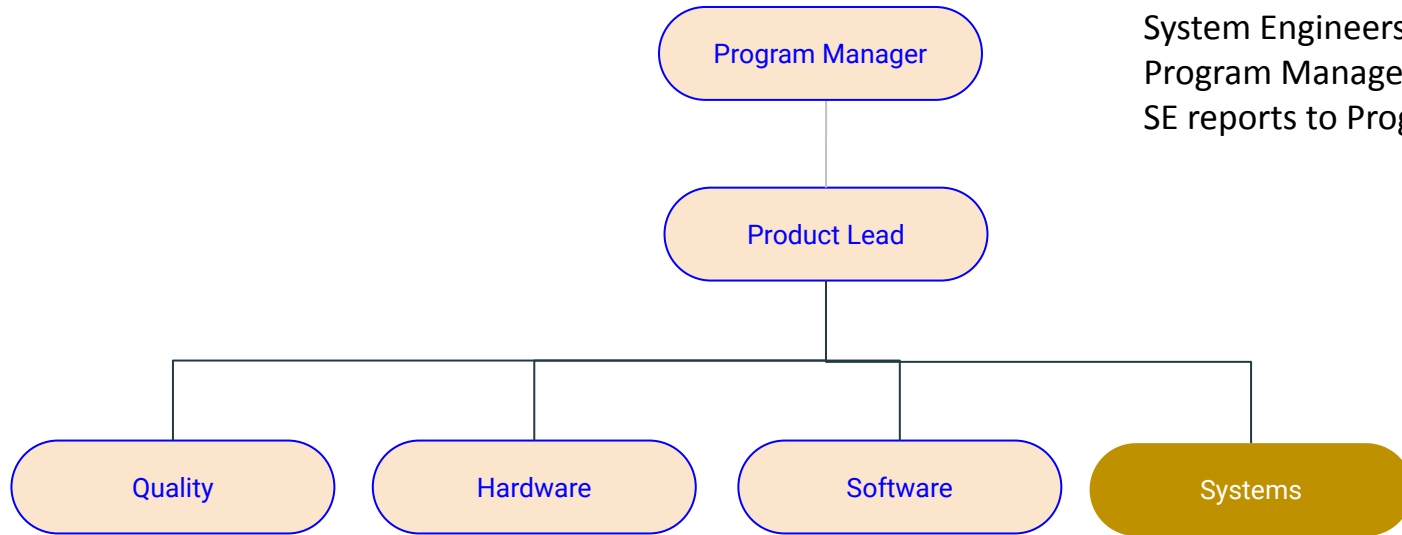
# Scenario 2: Journey of a SE in Quality-driven organization



## Scenario 2: Journey of a SE in Quality-driven organization



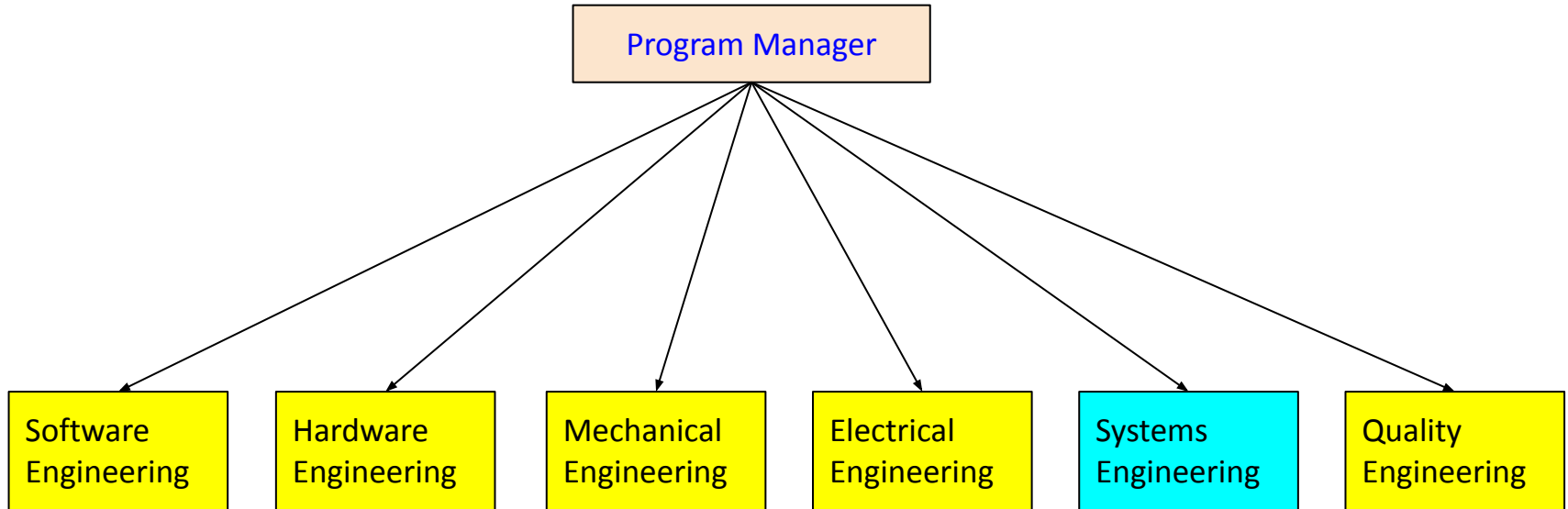
# Scenario 3: Journey of a SE in PM driven organization



System Engineers represents the Program Manager.  
SE reports to Program Manager.

Systems Engineers are not accountable for product results.

# Scenario 3B: Journey of a SE in PM driven organization



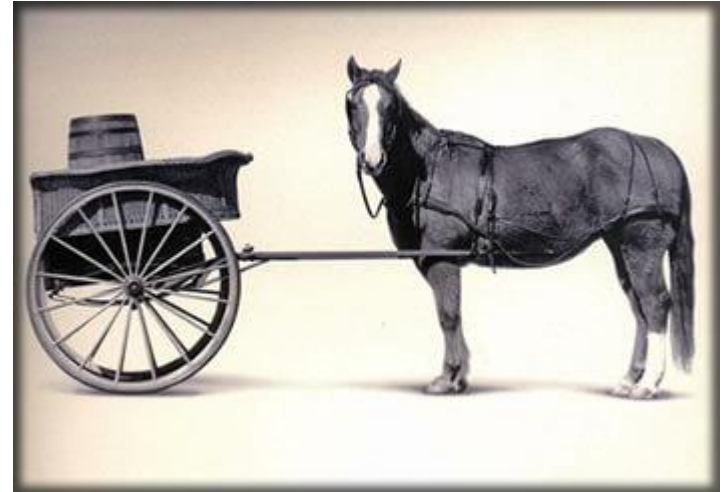
This model encourages siloed environment with no incentive to collaborate naturally...

# Where's the place of a Systems Engineer in an Organization?

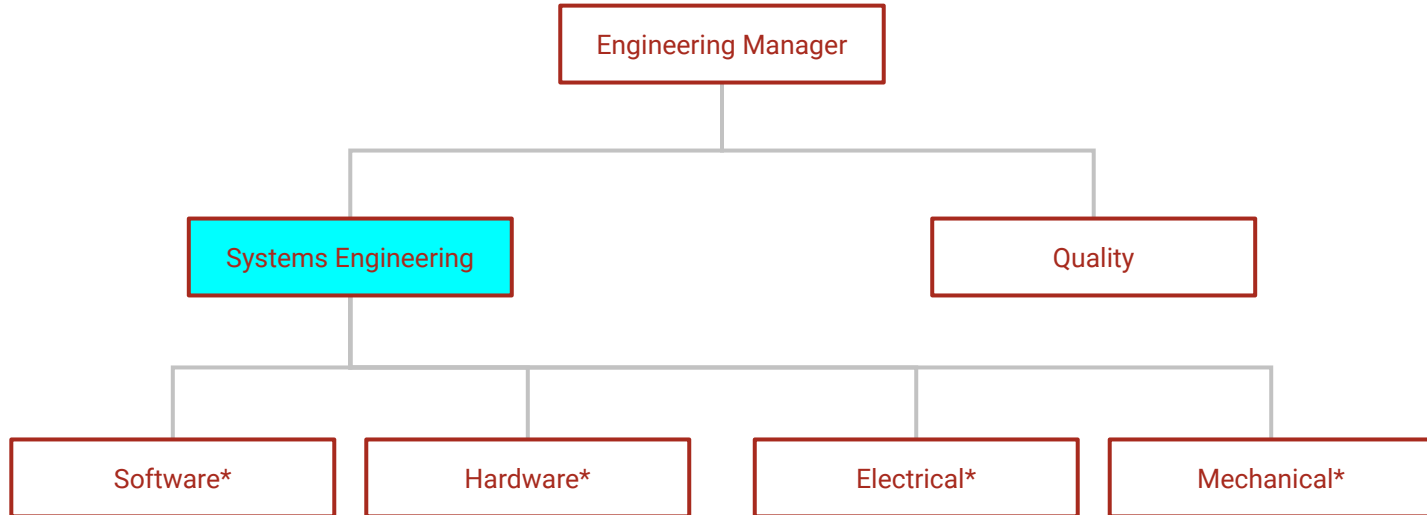
Depends on corporate sponsorship, i.e. who champions the project(s)? Are the project(s) sponsored by:

- Is it Quality Leadership?
- Is it Program Management Leadership?
- Is it Software division?

Is it the cart before the horse or the horse before the cart?



# Preferred scenario where SEs can excel



\*horizontal integration

This model presents a potential to establish Effective and Efficient visibility for Product success!

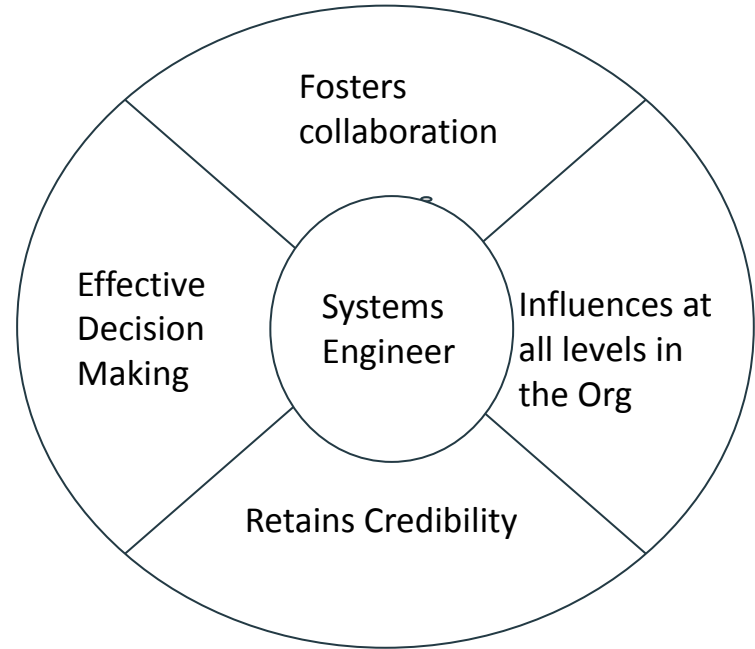
# Foundations of a Resilient Systems Engineer

Successful SE  
behaviors =

Your personal traits i.e  
who you are

+

Your professional skills i.e.  
what you can do



# Summary

- Depending on where Systems Engineering is placed in the hierarchy in an organization, a Systems Engineer's role and influence can be determined.
- Corporate leadership should decide how much of Systems Engineering rigor is necessary in their projects.
- Sphere of influence of a Systems Engineer may be dependent on addressing the key systems complexity in the project.

